



Goshen Timber Frames

Timber Frame Homes - House Plans

Chestnut Cove



This floor plan gathers the kitchen, dining area and great room around a central stair/powder room area. The wall of windows at the end of the great room floods the whole area with light. A master suite may be upstairs or down. The office overlooks the great room and has a view through its windows into the treetops.

2126 Square Feet

Pricing

Frame only:

- \$46,772 Planed and chamfered eastern white pine
- \$63,142 Planed and chamfered douglas fir or cypress
- \$ 6,500 Raising fee

Timber Frame Package:*

- In eastern white pine:
- \$133,798 (\$62.93/sq. ft.)
- In douglas fir or cypress:
- \$150,168 (\$70.63 /sq. ft.)



*Goshen's Timber Frame Packages include the following:

- Design Revisions
- Timber Frame
- Timber Frame Erection
- Kiln-dried Tongue & Groove decking on ceilings and loft floor deck
- High-density urethane insulated panels
- Panel installation

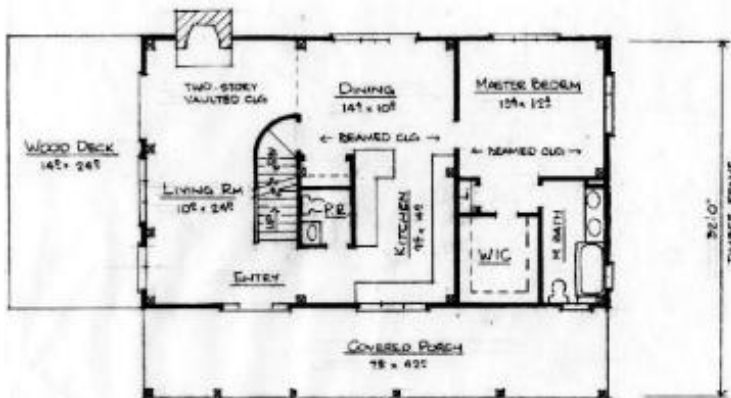
For a complete description of Goshen's package, please go to [Scope of Supply](#). We will be happy to give you estimates for shipping and crew travel expense when we learn the location of your building site. Package price may change at time of bid due to fluctuating market prices of OSB and dimensional lumber.

<http://timberframemag.com>

(828) 524-8662

Fax: (828) 369-3605

Email: info@goshenframes.com



© Copyright 2003 Goshen Timber Frames
All rights reserved