



Timberview

Main Level 1864
Upper Level 411
Lower Level 1079

Total 3354

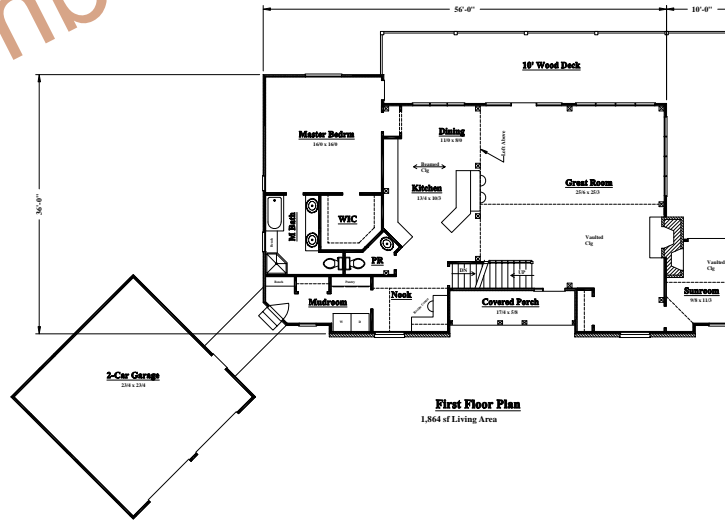
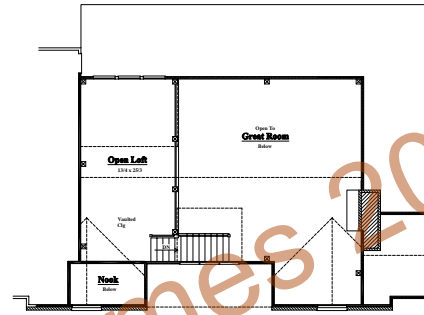
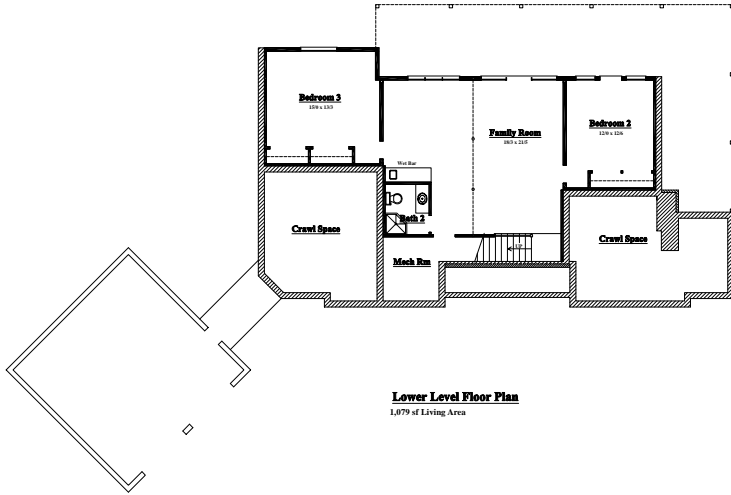
Garage 523
Covered Porches 102
Open Decks 654

Number of Stories 1 1/2
Foundation Daylight Daylight Basement

Construction Type Timber Frame
Enclosure Structural Insulated Panels (SIPs)

Bedrooms 3
Baths 2 1/2

House Dimensions
Width 101'8"
Depth 70'3"
Maximum Ridge Height 25'8"



©Goshen Timber Frames 2007

PROJECT		Name	
DATE		2-22-07	
DRAWN BY		M/W	
CHECKED BY		M/W	
SCALE		1/8" = 1'-0"	
SHEET NO.		2 of 2	
Copyright 2007 by Goshen Timber Frames, Inc. All federal, state, and local codes, ordinances, regulations, etc. shall be considered as part of specific contracts for this building and shall take precedence over any other specifications or drawings. All dimensions and conditions shall be verified on site by builder.			
NO.	DATE	REVISIONS	BY